

The background is a vibrant red with abstract, flowing shapes. On the right side, there is a vertical strip of dark grey. A green and yellow object, possibly a surfboard or a piece of equipment, is partially visible at the top right, overlapping the red background.

PROPOSAL FOR SALE OF SURF SIMULATOR

ABOUT US

Vibhuti Entertainments is a trusted organisation highly experienced in supplying high quality range of Game zone equipment, Virtual Reality gaming equipment and Amusement/Adventure parks, and water parks.

We have already set up many Game zones, Virtual Reality zones and amusement parks in India. Our people are highly trained and skilled professionals.

We undertake planning and designing of rides, technical inspections, safety procedures, training, setting up systems or management.



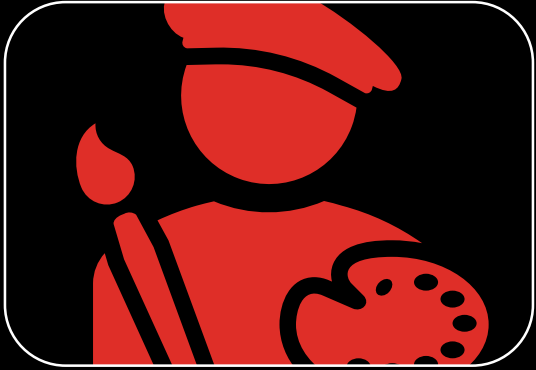
VIBHUTI
ENTERTAINMENT

Reimagine Passion

Leading Importer of Amusement Equipments

INDIA | CHINA | TURKEY

SURF SIMULATOR – OUR SERVICES



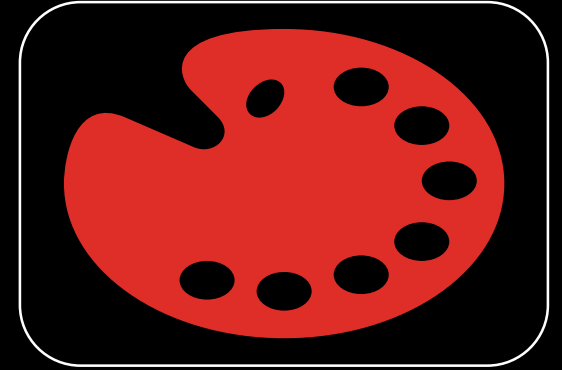
Designing



Budget
estimation



Product selection
assistance



Installation

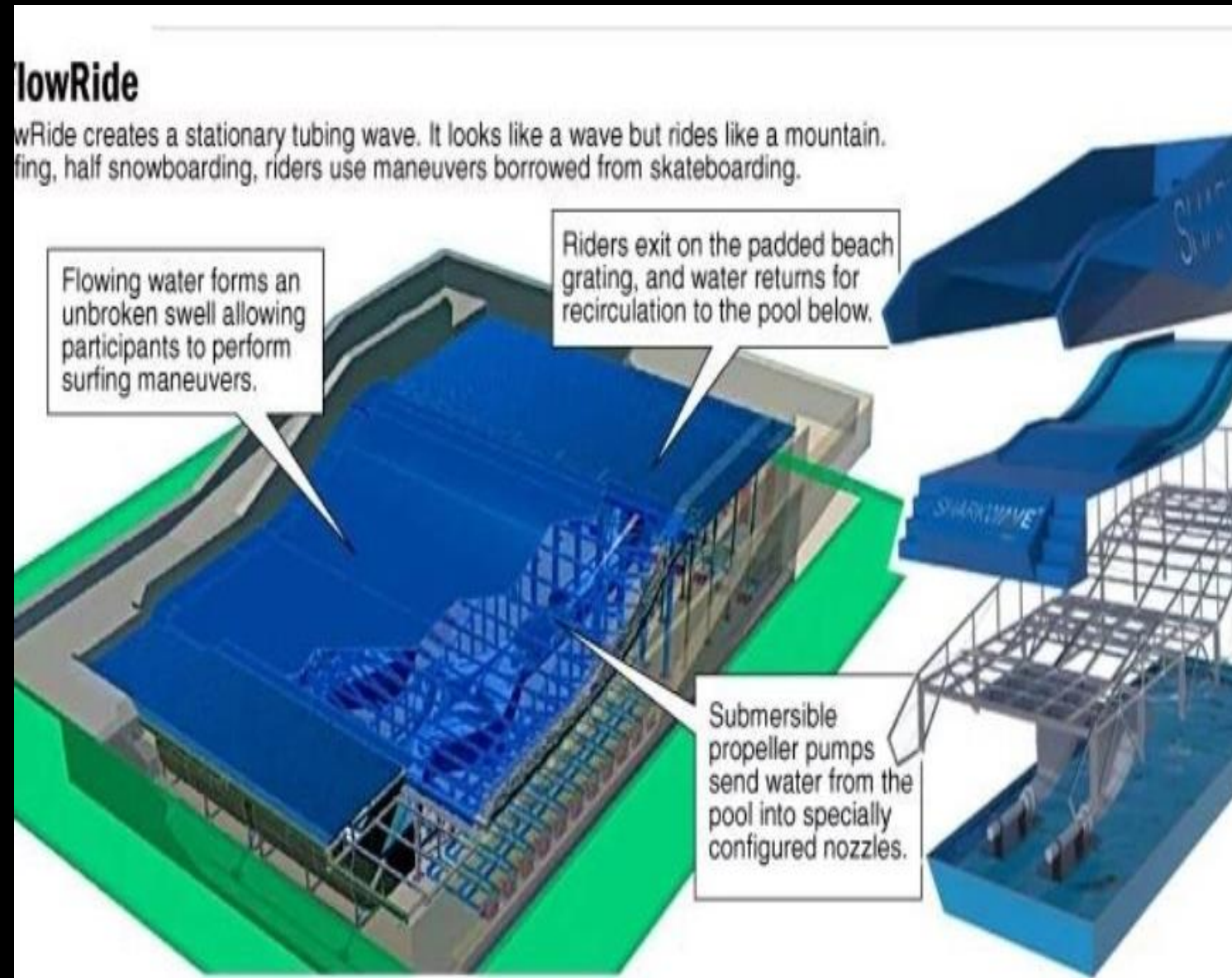
FIBER GLASS SURFING SIMULATOR

Flow rider is a surfing simulator. The Water passes through a specially-made compression system and nozzle, forming a layer of thin and uniform flow on the slope surface of the sliding plate, to hold the riders sliding to and fro along with the slope.

The riders shall feel as pleasant as surfing in the sea.

The surface is made up of waterproof PVC material (soft membrane), which can ensure safe enjoyment.

All the surf simulators perfectly match any water park, theme park, mall, commercial leisure and sporting.



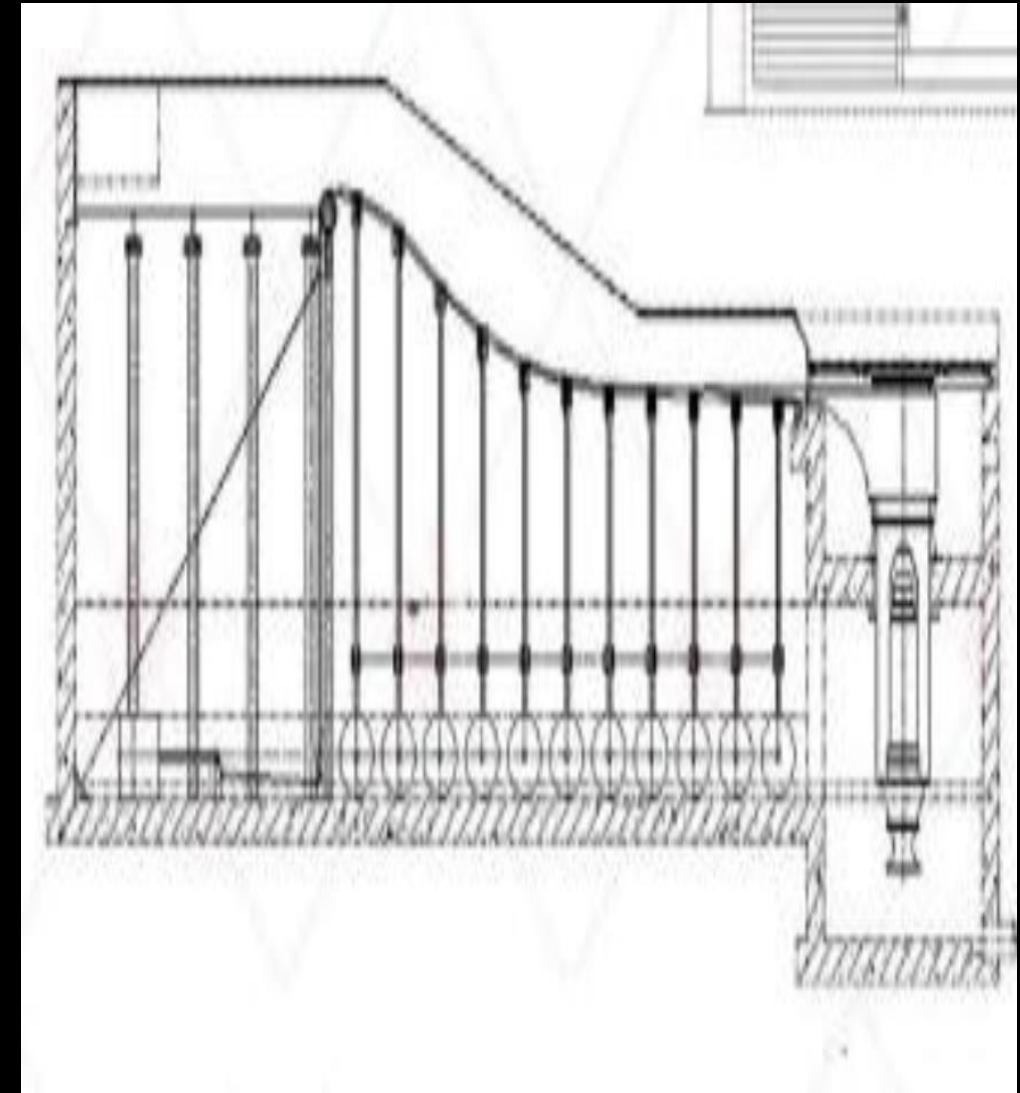
OVERALL EQUIPMENT INFORMATION

1. Floor Space: 6.3m*15.3m multi player Surf Simulator
2. Height: 3.7m
3. Visitor Flow: 160-240 riders per hour or flexible
4. Tank volume: 150,000 liters
5. Power: 120 KW
6. Filter for Sea water



SPECIFICATIONS

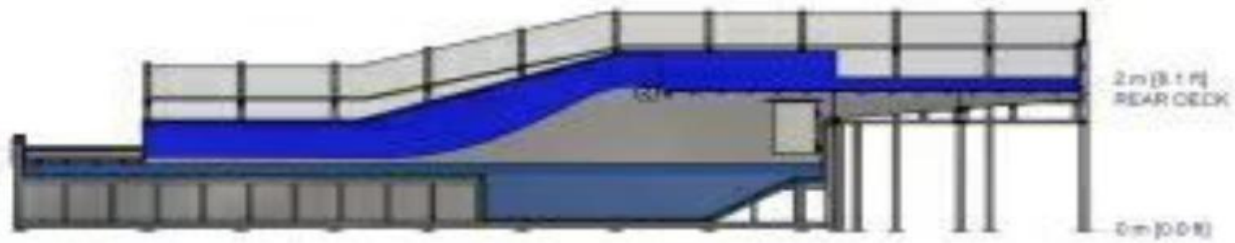
NAME	SUNNY FLOW RIDER
MODEL	DOUBLE
SIZE	Customized Size
COMPOSITION	Concrete structure, steel structure, engine, nozzle, membrane surface, and control system
CAPACITY	2 riders / time
MATERIAL	Steel structure Soft membrane surface Power by pump
COLOURS	Blue and more can choose
PACKING DETAILS	EPE foam & timber frame, nude pack
HSN CODE	95069900



EQUIPMENT PARTS LIST

No.	Item	Specs	Qty.	Unit	Remarks
1	Taxilane of surfing simulator	15.3m*6.3m	1	Set	Elastic membrane material on Skateboard surface
2	Surfing engine nozzle	1.5ml*2.35mD*1.18mH	2	Set	304# stainless steel
3	Surfing engine	37KW	4	Set	
4	Support structure, steel framework keel		1	Set	
5	Frequency converting electronic control system		2	Set	Schneider component
6	Field control device	Trend	1	Set	Schneider component
7	Electric wire & pipe	Customized	1	Lot	From pump to control device

STRUCTURE VIEWS



SIDE SECTION



FRONT



CONSTRUCTION AND INSTALLATION



CONSTRUCTION AND INSTALLATION



CONSTRUCTION AND INSTALLATION



OUR SERVICE

We will provide our customers products with best quality and best price.

Give suggestions for equipment selection. Make designs according to the customers land information and requests.

Send engineers to the customers site to supervise the workers in order to install the equipment's

Guide the staffs to operate the equipment's and to manage the water park.

WHY CHOOSE US

Our Manufacturer partners have a development group and design project group and over a period of 22 years experience in water park equipment's.

It has more than 500 employees including the number of professionals.

It is a member of IAAPA and China Theme park Association. It has obtained Quality certificates in SGS, Rohs, China Special Equipment License etc.

The company has Independent R & D department, laboratory, manufactory base

OUR QUOTATION

**Chennai Landing INR 68L,
Transport and Installation
inclusive price**

**Including Engineer visit
from China at the time of
Installation**

**After Sales support would
also be provided by us at
all times.**



Thank you

Mr. Manjeet Chavan
Vibhuti Entertainments
Nagpur.
9923466460

Mrs. Aishwarya K N
South Partner
Vibhuti Entertainments
Chennai.
9884606533

- We thank you for this opportunity and look forward to setting up your Surf Simulator.
- Our Delivery timelines will be ranging from 60 days to 80 days depending on the manufacture and import needs of the products under consideration. Any delay caused due to unforeseen circumstances will be intimated in advance.
- Payment of 30% of the order value will be needed as token advance for confirmation of order. Payment terms stated by us should be honoured to ensure the proper delivery of products.
- Our Installation team comprises of highly skilled, experienced and trained professionals, hence ensuring a smooth installation process to the customer.
- Any travel, food and accommodation expenses of the installation team has to be reimbursed by the customer.
- We are always available to address any post sale concerns and endeavour to provide prompt assistance.
- Wishing you the best of luck on this project and look forward to a good business relationship with you.